

Bite-related and septic syndromes caused by cats and dogs

Richard L Oehler, Ana P Velez, Michelle Mizrachi, Jorge Lamarche, Sandra Gompf

Bite infections can contain a mix of anaerobes and aerobes from the patient's skin and the animal's oral cavity, including species of *Pasteurella*, *Streptococcus*, *Fusobacterium*, and *Capnocytophaga*. Domestic cat and dog bite wounds can produce substantial morbidity and often require specialised care techniques and specific antibiotic therapy. Bite wounds can be complicated by sepsis. Disseminated infections, particularly those caused by *Capnocytophaga canimorsus* and *Pasteurella multocida*, can lead to septic shock, meningitis, endocarditis, and other severe sequelae. An emerging syndrome in veterinary and human medicine is methicillin-resistant *Staphylococcus aureus* (MRSA) infections shared between pets and human handlers, particularly community-acquired MRSA disease involving the USA300 clone. Skin, soft-tissue, and surgical infections are the most common. MRSA-associated infections in pets are typically acquired from their owners and can potentially cycle between pets and their human acquaintances.

Lancet Infect Dis 2009;
9: 439-47

Division of Infectious Disease and International Medicine, Department of Internal Medicine, University of South Florida College of Medicine, Tampa, FL, USA (R L Oehler MD, A Velez MD, M Mizrachi MD, J Lamarche MD, S Gompf MD)

Correspondence to: Richard L Oehler, University of South Florida College of Medicine, c/o James A Haley Veterans Hospital, 13000 Bruce B Downs Blvd #111J, Tampa, FL 33611, USA
richard.oehler@va.gov

Introduction

"Love the animals: God has given them the rudiments of thought and joy untroubled"

Fyodor Dostoyevsky

No relationship is as constant and ancient to mankind as that between human beings and their pets. Dogs were first domesticated about 15 000 years ago from wolves living in or near China.¹ The first domesticated cat originated in Cyprus almost 9500 years ago.² Today, about 75 million dogs and 88 million cats are owned in the USA alone, with pets being found in about 63% of American households.³ In the UK, there are some 27 million domestic pets, inhabiting about 43% of British households.⁴

However, the closeness between pet owners and their animals comes with the potential for transmission of at least 30 infectious agents.⁵ In 2001, more than 350 000 people were treated in US hospital emergency departments for non-fatal dog-bite-related injuries.⁶ Annual direct medical costs related to dog-bite injuries are estimated to be approximately US\$165 million.⁷ Although certain zoonoses, such as bite-wound infections and cat-scratch disease are well recognised, other infections, such as device-related infections and community-acquired methicillin-resistant *Staphylococcus aureus* (MRSA) are newer and are increasing in prevalence. In this Review, we provide an overview of several of the most important infectious disease pathogens transmitted by dogs and cats to human beings, and in some cases, from human beings to their pets.

Bite-related injuries

Epidemiology

In the USA, dog and cat bites comprise roughly 1% of emergency room visits annually,^{8,9} with similar numbers reported in Europe. Dog bites (figure 1) cost over \$1 billion per year in the USA.⁹ Roughly 60% of animal bites are related to dogs, with 10–20% attributed to cats. Cat bites are more common in women and the elderly.^{10,11} Individuals aged under 20 years and men are associated with a higher incidence of injury.^{12,13}

A common and controversial topic is the risk of bite injury posed by each specific dog breed. Pit bull terriers lead the list of most commonly reported aggressors, followed by Rottweiler and German shepherd breeds.¹⁴ Larger dog breeds can cause more severe crush injuries due to the higher pressures exerted by their jaws, and can pose a greater risk of major organ or vessel injury than do smaller animals. Most bite exposures occur in young children, involve unrestrained dogs on the owner's property, and about 20% involve a non-neutered dog.^{15,16} Risk is highest in young boys aged 5–9 years. Because of their small size and lack of insight about provocative behaviour, children might be more likely to provoke a bite by simple play, teasing, or abuse. Because



Figure 1: Dog-bite patient with extensive facial injuries
Courtesy of Beata Casañas [Au: please provide the affiliation.]



Figure 2: Septic arthritis of left first proximal interphalangeal joint
Courtesy of John Greene [Au: please provide the affiliation.]

	Aerobes	Anaerobes
Cat bites	<i>Pasteurella</i> spp, <i>Streptococcus</i> spp, <i>Staphylococcus</i> spp, <i>Moraxella</i> spp	<i>Fusobacterium</i> spp, <i>Bacteroides</i> spp, <i>Porphyromonas</i> spp
Dog bites	<i>Pasteurella</i> spp, <i>Streptococcus</i> spp, <i>Staphylococcus</i> spp, <i>Neisseria</i> spp	<i>Fusobacterium</i> spp, <i>Bacteroides</i> spp, <i>Porphyromonas</i> spp, <i>Prevotella</i> spp, <i>Capnocytophaga</i> spp

*Most infections include a mix of aerobes and anaerobes.

Table: Major pathogens isolated from dog and cat bites¹⁷

of the child's height in relation to the dog's mouth, children often have bites to the face, neck, or head.¹⁷ Most exposures in adults are to the hand, followed by bites to the face, scalp, neck, and thigh or leg.¹⁸

Cat bites are most likely to involve the upper extremities and face,¹⁹ but are less destructive and life threatening. However, cats' narrow sharp teeth inflict deeper puncture wounds than dogs, and tend to carry a higher risk of infection and soft-tissue abscess. If occurring close to joints or bones, such bites might be complicated by septic arthritis (figure 2). Patients presenting more than 8 h after a bite injury often have infected wounds, with cat bites progressing to infection more rapidly than dog bites.

Microbiology

Most bite infections contain a mix of aerobes and anaerobes from both the skin of the patient and the mouth of the animal (table). Some of the common pathogens in cat bites include *Streptococcus* spp (including *Streptococcus pyogenes*), *Staphylococcus* spp (including MRSA), *Fusobacterium* spp, *Bacteroides* spp, *Porphyromonas* spp, *Moraxella* spp, and most commonly *Pasteurella multocida*. Like cat bites, the canine pathogens involved are usually a mix of aerobes and anaerobes. Commonly found pathogens include *Pasteurella canis*, *Streptococcus* spp, *Staphylococcus* spp, *Fusobacterium* spp, *Bacteroides* spp, and *Capnocytophaga canimorsus*.¹⁷

Severe infections caused by *C canimorsus* have been described in chronic alcohol users and in asplenic and immunocompromised patients. In a series of 39 cases of *C canimorsus* sepsis, Pers and colleagues²⁰ found that

56% of cases were related to dog bites, and 10% were due to licking. Case mortality was 31%.

Clinical manifestations

Severe infections related to dog and cat bites can occur in about 20% of all cases.²¹ Depending on the predominant organism, infection can become systemic with bacteraemia or other serious sequelae. Because of the number of small enclosed compartments and fascial planes, numerous small nerves, and several bones and joints adjacent to the surface, hands are the most common bite site to develop infection and long-term morbidity. They are also the most likely site to develop rapidly spreading and permanently disabling damage. By contrast with other sites, 30–40% of hand bites become infected. Cat bites are more likely to penetrate deeply, particularly into bones and joints, leaving only a small skin opening from which fluids can drain. Therefore, deep abscesses (spread along fascial planes) and osteomyelitis are more common with cat bites.^{21–23}

Bites to the head and neck are particularly severe in infants and children. Dogs can create depressed or open skull fractures, severe scalp and intracranial bleeding, and severely disfiguring damage to the face or damage to major vessels and nerves in the neck and thoracic inlet. Such damage is often associated with high mortality. Cats can scratch or bite the face. However, head and neck injuries caused by cats are much less serious.^{24,25}

Management

Proper treatment of cat and dog bites should incorporate treatment of the immediate injury (superficial and possibly in deeper tissue) and management of the risk of acute infection (panel). Although most therapy for cat and dog bites tends to be empirical, wound swabs (preferably deep) for Gram stain and aerobic and anaerobic cultures should be obtained for each infected wound before therapy. Gram stains tend to be specific indicators of infection, but have low sensitivity.²⁸ Careful assessment of wound characteristics is crucial for management, because deep wounds are at greater risk for abscess formation after primary closure. Prompt and generous irrigation with tap water or normal saline helps to dislodge foreign matter and bacteria inoculated into the wound during the bite, and can reduce the transmission of rabies virus. Careful debridement of devitalised tissues, including probing for embedded teeth or fragments, is crucial. A radiograph should be obtained of the site of injury to rule out presence of a foreign body, bony involvement, or fracture. Additional diagnostic testing such as CT or MRI should be used if clinically indicated. In the case of bites to the hand, orthopaedic specialist involvement is important, along with subsequent elevation, immobilisation, and hand physiotherapy. A plastic surgeon should be consulted in the case of most head and neck bites. Because of an ample vascular supply, face-related wounds can be associated with a lower risk of infection and can be closed

for cosmesis. Neurosurgical consultation might be indicated in children with possible cranial injury.

Consultation with local public-health authorities should be strongly considered for any serious domestic pet bite, particularly in the case of a stray animal, if the attack was unprovoked, if the pet cannot be apprehended, or if the pet's rabies vaccine status is unknown. The circumstances of the bite exposure and the animal's behaviour and whereabouts should be carefully documented.

Rabies prophylaxis should be considered, on the basis of exposure risk and local epidemiological information. In addition, the need for tetanus vaccine or booster for the patient should be addressed. Re-examination should be scheduled at 48 h.^{24,29} The possibility of subsequent post-traumatic stress disorder should not be underestimated and might warrant education of the patient and anticipatory guidance.

Prophylactic antibiotics are advised unless the bite is very superficial and easily cleansed. Treatment should be directed toward the pathogens that colonise the oral cavity of the aggressor animal. Because *Pasteurella* spp are usually not susceptible to dicloxacillin, cephalexin, clindamycin, or erythromycin, these antibiotics should not be used as monotherapy in the treatment of domestic animal bites. Amoxicillin–clavulanic acid provides excellent coverage against *P multocida*, *Capnocytophaga* spp, anaerobes, and susceptible *S aureus*, and is a mainstay of oral prophylaxis. Doxycycline with or without metronidazole is a suitable combination to cover these organisms in penicillin-allergic patients. Alternatives include clindamycin with a fluoroquinolone, or clindamycin plus trimethoprim–sulfamethoxazole (co-trimoxazole) in children. Ceftriaxone can be used in pregnancy, and cefuroxime and cefpodoxime are oral alternatives that also are generally safe (class B) to use. If community-acquired MRSA incidence is high in a region, this data should inform the selection of appropriate antibiotics. Doxycycline is an effective oral alternative for coverage of MRSA, as is co-trimoxazole, which is more appropriately for use in children. Clindamycin might be used if the community strain of MRSA is not likely to carry mutations for inducible clindamycin resistance.²⁴

Established infection is likely to require admission to hospital for surgical debridement and drainage. Cultures of purulent fluid should be obtained before initiating new antibiotics to ensure appropriate antibiotic choice and to narrow subsequent therapy decisions. Wound swabs are relatively uninformative due to the likelihood of culturing contaminating organisms. Suitable antibiotics for inpatients include a β -lactam– β -lactamase inhibitor combination, such as ampicillin–sulbactam, piperacillin–tazobactam, or ticarcillin–clavulanic acid. Ceftriaxone, aztreonam, or a fluoroquinolone with excellent Gram-negative coverage plus metronidazole are suitable alternatives, as is monotherapy with a carbapenem such as ertapenem, meropenem, doripenem, or imipenem–cilastatin.³⁰

Panel: Management and treatment of dog and cat bites^{21,23,26,27}

Cultures

Gram stain, aerobic, and anaerobic cultures are indicated if abscess, severe cellulitis, devitalised tissue, or sepsis present

Irrigation

Normal saline irrigation copiously with high-pressure jet from syringe

Debridement

Debride necrotic tissue and remove any foreign bodies

Imaging

Plain radiographs, MRI, or CT if fracture or bone penetration, to rule out osteomyelitis

Wound closure

Primary wound closure is not usually indicated

Antimicrobial therapy

Prophylactic antibiotics in selected cases. Coverage based on patient type and specific animal involved

Hospitalisation

Indications include fever, sepsis, spreading cellulitis, substantial oedema or crush injury, loss of function, immunocompromised status, or noncompliance

Immunisations

Tetanus booster if original three-dose series has been given but none in the past year.

Give primary series and tetanus immunoglobulin if the patient was never vaccinated

Human diploid rabies vaccine (days 0, 3, 7, 14, and 28) with rabies immunoglobulin may be required (assess exposure risk)

Septic syndromes

Sepsis can be a severe complication of bite wounds, particularly those infected with *C canimorsus*, *P multocida*, *Staphylococcus* spp (including MRSA), and *Streptococcus* spp. Meningitis, endocarditis, and peritonitis can also complicate bite-wound infections. Several other species, including *Bacteroides*, *Fusobacterium*, *Neisseria*, and *Prevotella*, might also produce bite-wound sepsis in individuals with leukaemia and lupus, and in those receiving chronic steroids. The clinical picture in these subgroups follows the same pattern as in other disseminated infections. Because the overwhelming proportion of non-staphylococcal or non-streptococcal septicemic infections are due to *Pasteurella* spp and *C canimorsus*, we will focus on these two syndromes. Reviews of the less common pathogens have been published elsewhere.³¹

Capnocytophaga canimorsus

Epidemiology

Initially identified as Centers for Disease Control group dysgonic fermenter 2 (DF-2), *C canimorsus* was first isolated in 1976 from the blood and spinal fluid of a dog-bite patient and later became known as the “dog-bite organism”.³² In 1989, Brenner and colleagues³³ proposed naming the group *C canimorsus* due to its association with dog bites. *C canimorsus* (DF-2) strains are oxidase and catalase positive. The organism has been isolated as

normal flora in dogs, cats, and from patients after dog or cat bites. A separate group of capnocytophaga, known as dysgonic fermenter 1 (DF-1), originates from the human oral cavity and are oxidase and catalase negative. They cause disseminated infections only in severely immunocompromised patients.³⁴ The *Capnocytophaga* genus consists of nine species. All are common to human and canine flora, but only *C canimorsus* causes severe infections in human beings.

The spectrum of *C canimorsus* infections can range from cellulitis to meningitis and endocarditis.^{35,36} After the first report in 1976, 160 more cases have been published, including gangrene, sepsis, meningitis, and endocarditis. Most cases are associated with an underlying immune disorder, including splenectomy, chronic alcohol use, or cirrhosis. However, no identifiable risk factor has been found in 40% of cases.³⁷

Capnocytophaga spp do not produce endotoxin and infection is of relatively low incidence in those without immunodeficiency. Its pathogenicity is not fully understood, but production of a substance that inhibits neutrophil motility has been described by Shurin and colleagues,³⁸ and seems to be associated with moderate resistance to phagocytosis. Furthermore, gliding motility might facilitate migration of the organism into the vascular space. Serum bactericidal resistance has been recognised in blood isolates, which is thought to result from a mutated lipopolysaccharide structure of the cell wall that inhibits phagocytosis.^{39–41}

Severe sepsis caused by *C canimorsus* is extremely rare. Most infections occur in individuals older than 40 years. Almost 80% report some form of canine exposure, 58% report a bite, and 20% report exposure without a bite or scratch (such as licking of broken skin).²⁰ Mortality from sepsis can range from 25–30% to as high as 60% in patients with septic shock. 60% of those who develop septic shock die within 30 days.^{20,42}

Clinical manifestations

The panorama of clinical features ranges from mild to fulminant, and includes fever, chills, myalgia, vomiting, diarrhoea, abdominal pain, malaise, dyspnoea, mental confusion, and headache. After an incubation period of 1–7 days, patients can experience an abrupt onset of malaise, abdominal pain that might mimic an acute abdominal syndrome, confusion, shortness of breath, and rapid progression to severe septic shock. On physical examination, patients present with a petechial rash on the trunk, lower extremities, and mucous membranes. The rash might evolve from purpuric lesions to gangrene. The clinical manifestations of sepsis are secondary to a profound inflammatory response leading to microvascular injury of the endothelium, resulting in disseminated intravascular coagulation, acute respiratory distress, gangrene, and organ damage. Patients with severe manifestations might develop septic shock that can progress to multiorgan failure and death.^{42–44} Individuals

aged more than 50 years are at greatest risk. Endocarditis caused by *C canimorsus* is not extensively reported in the literature; however, there are many reports of bacteraemia and sepsis in which a septic focus was never found. As with other fastidious Gram-negative infections, the published record of cases might underestimate the true incidence of *C canimorsus* infection. Clearly, myocarditis, as well as culture-negative, acute, or subacute endocarditis, might occur. Classical findings that are associated with endocarditis, such as heart murmur, fever, and increased C-reactive protein, might be unapparent at presentation. In addition, infection might occur in individuals without previous cardiac pathology. A history of a recent dog bite in a patient presenting with clinical features of endocarditis should raise suspicion for *C canimorsus* infection.⁴⁵

The circumstances under which this microorganism causes meningitis in human beings is not clear. Although septic shock attributable to infection with *C canimorsus* has frequently been described, the occurrence of meningitis seems rare. Apart from a possible bite wound found at physical examination, no other symptom is known to discriminate between this rare form of meningitis and meningitis caused by other microorganisms. The detection of small Gram-negative bacilli in the cerebrospinal fluid supports the diagnosis; however, no bacteria were initially found in about a third of reported cases. *C canimorsus* meningitis should be suspected if signs and symptoms of meningitis coincide with a history of a recent dog or cat bite.³⁴

A few cases of fatal acute haemorrhagic adrenal insufficiency (Waterhouse–Friderichsen syndrome) caused by *C canimorsus* infection have also been described. Gangrene and purpura fulminans might occur as a consequence of widespread inflammation, endothelial damage, hypoperfusion, and disseminated intravascular coagulation.^{43,44,46}

Management

Diagnosis is usually based on clinical history because the bacteria are extremely difficult to grow. Up to 14 days of incubation might be necessary to detect growth on typical media. Peripheral blood smear and observation of abundant intracytoplasmic fusiform rods within neutrophils allows a presumptive diagnosis in the correct setting.^{42,47} *Capnocytophaga* spp infection responds well to penicillin and β -lactam- β -lactamase inhibitor combinations. Other active agents include clindamycin, linezolid, tetracycline, carbapenems, and chloramphenicol. Antibiotics with variable activity include erythromycin, rifampicin, quinolones, metronidazole, vancomycin, latamoxef, aztreonam, penicillins, and cephalosporins. Polymyxin B and E, fusidic acid, fosfomicin, aminoglycosides, and trimethoprim have limited activity. Because of the relatively aggressive nature of *C canimorsus* and the difficulty in obtaining a laboratory diagnosis, therapy should be started as early as possible.^{40,42}

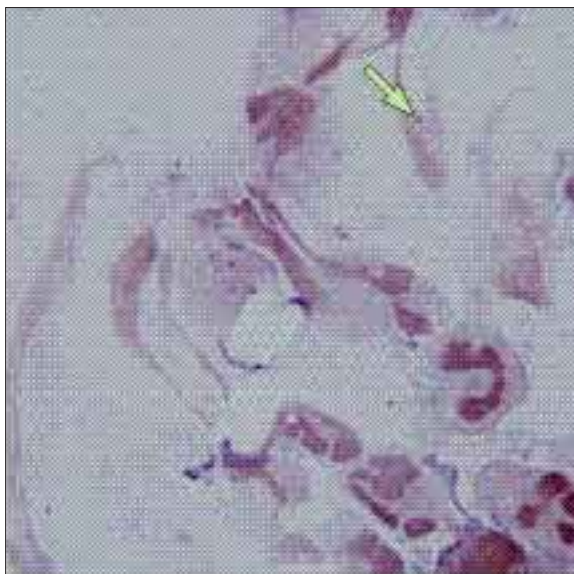


Figure 3: Gram-positive, non-spore-forming bacilli consistent with *Pasteurella multocida* from a peritoneal dialysis patient with *Pasteurella*-associated peritonitis

Courtesy of Jorge Lamarche [Au: please provide the affiliation].

Pasteurella spp

Epidemiology

Pasteurella spp are Gram-positive, facultative anaerobic, non-spore-forming bacilli that can be seen in pairs or short chains (figure 3). Most strains are positive for catalase, oxidase, indole, sucrose, and decarboxylate ornithine. Potential virulence factors include capsular lipopolysaccharide, a cytotoxin, and iron acquisition proteins. The subtypes associated with human infections include *P multocida* subsp *multocida*, *P canis*, *P multocida* subsp *septica*, *P stomatis*, and *P dagmatis*.^{48,49} *P multocida* can be found as part of the normal flora of the upper respiratory tract of some mammals, particularly cats. Most human infections are caused by dog or cat bites, although licks from these animals have also been associated with infection.^{50–53} Exposures involving other types of animal contact and some with no known animal contact have been described.⁵⁴

Clinical manifestations

Pasteurella spp can cause serious infections, including necrotising fasciitis, septic arthritis, osteomyelitis, and less commonly, sepsis, septic shock, and meningitis.^{51,52,55} Severe infection (ie, sepsis and septic shock) can be seen in infants, pregnant women, patients on chronic steroids, HIV-positive individuals, organ-transplant recipients, and other immunocompromised patients.^{52,55,56} Bacteraemia occurs in 25–50% of patients with pneumonia, meningitis, and septic arthritis due to *P multocida*. Many patients with bacteraemia have evidence of notable liver disease.^{52,57,58} However, rare cases of bacteraemia have also been described in previously healthy individuals. In such cases, the mortality remains substantial at 25%.⁵²

Pasteurella meningitis is a disease of the extremes of life, particularly infants younger than 1 year and adults older than 60 years.^{52,59} Results of cerebrospinal-fluid examination are similar to other bacterial meningitides, with increased white blood cell count, high protein concentration, and low glucose concentration. Gram stain of the cerebrospinal fluid is positive in 80% of patients, but the organisms can be confused with *Haemophilus influenzae* or *Neisseria meningitidis*.

Endocarditis is a rare complication of *P multocida* infection that can involve native or prosthetic valves.^{60,61} Peritonitis due to *P multocida* can occur in the setting of continuous ambulatory peritoneal dialysis (figure 3).⁵⁸

Management

A clinical history of a dog or cat bite should prompt the diagnosis. Risk of disseminated disease and septic shock should be suspected in patients with risk factors such as liver disease. *Pasteurella* is not a difficult organism to isolate and identify because the bacterium grows well on various commercial media, including chocolate and sheep-blood agar. However, it does not grow well on certain selective enteric media. Recovery from wounds, blood cultures, peritoneum, or other typical sites of oxidase-positive, Gram-negative bacilli that are strongly indole positive but fail to grow on MacConkey agar is usually sufficient to identify the organism.⁶²

Like *C canimorsus*, *P multocida* is not susceptible to many oral antibiotics typically given for skin and soft-tissue infections, including dicloxacillin, cephalexin, and clindamycin. In addition, many strains are resistant to erythromycin (although susceptible to azithromycin). In most cases, treatment with betalactam antibiotics, such as penicillin or ampicillin, is effective. However, penicillin-resistant *Pasteurella* spp have been reported.⁶³ Other options include use of second-generation and third-generation cephalosporins (eg, cefuroxime, cefpodoxime), and doxycycline or fluoroquinolones in penicillin-allergic patients.⁵²

Community-associated meticillin-resistant *Staphylococcus aureus* infections

Epidemiology

MRSA, long recognised as a human pathogen, is notorious for causing a wide variety of disease syndromes. MRSA has long been recognised as a pathogen associated with hospital or health-care settings.⁶⁴ Community-acquired MRSA strains have been increasing in prevalence over the past decade. These organisms and the most common genotype, USA300, are distinct from traditional hospital-acquired strains in that they are easily transmitted in the household, are a frequent cause of skin and soft-tissue infections, are generally susceptible to most antibiotics other than β -lactams, and produce the Panton-Valentine leukocidin fusion protein.⁶⁵

As community-acquired strains increase in prevalence, a growing body of clinical evidence has documented



Figure 4: MRSA-associated infection of the left forearm in a 15-year-old patient whose cat had developed recurrent MRSA culture-positive skin lesions of the perineal area

Courtesy of the Bella Moss Foundation.

MRSA colonisation in domestic animals, often implying direct acquisition of *S aureus* infection from their human owners.^{66–69} MRSA colonisation has been documented in companion animals such as horses, dogs, and cats, and these animals have been viewed as potential reservoirs of infection.^{70–72} Paradoxically, although *S aureus* is the predominant staphylococcal strain in horses and human beings, *Staphylococcus intermedius* is the overwhelming species in cats and dogs, with *S aureus* comprising less than 10% of feline and canine animal strains.⁷³

The recognition of *S aureus* as a potential coloniser of domestic animals was first documented in 1959, when Mann⁷⁴ reported isolating *S aureus* from the nares of 23 of 100 dogs and concluded that, “the common house pet can serve as an important reservoir or carrier of staphylococcal infective [sic] for man.” This observation was reinforced by Live and Nichols⁷⁵ in 1961. At the dawn of the MRSA era, Live and Nichols⁷⁶ wrote that, “antibiotic-resistant staphylococci have become established in veterinary hospitals, which might act as a source of the organisms for human beings associated with them, as well as for hospitalised animals.” In the early 1980s, experimental transmission of *S aureus* from

dogs to kennel attendants was also reported.⁷⁷ In 1988, Scott and colleagues⁷¹ reported the first published case of domestic animal transmission of MRSA strains in a UK rehabilitation geriatric unit from a ward cat that was believed to be heavily colonised from the environment. Screening of patients and staff revealed that 38% of nursing staff were colonised. The outbreak was promptly aborted when appropriate infection-control measures were instituted and the cat was removed from the ward. 6 years later, Cefai and colleagues⁷² reported a second UK case of MRSA associated with a domestic pet. An epidemic strain (designated EMRSA1) of MRSA was isolated from a patient in an intensive-care unit. The strain was traced to a nurse and his spouse, who was also a nurse working in another ward. Despite a decolonisation attempt, both nurses were then linked to a second outbreak in the unit 6 months later. The intensive-care nurse later revealed that his dog had developed an eye infection for several weeks. Swabs of the pet confirmed the presence of EMRSA1. Simultaneous decolonisation of the entire household (both nurses and the dog) was ultimately successful.

Since the initial reports of MRSA transmission between human beings and pets,⁷² more sophisticated procedures for typing bacterial pathogens have become available. DNA fingerprinting techniques have further documented the transmission of MRSA strains between human beings and household pets. Simoons-Smit and colleagues⁷⁸ used genetic fingerprinting to analyse eight non-resistant strains of *S aureus* obtained from a patient with recurrent *S aureus* infections, her relatives, and her household pets. The index patient suffered from frequently relapsing pyoderma associated with congenital bullous ichthyosiform erythroderma. *S aureus* strains were isolated from the patient, her mother, boyfriend, and from the cat and dog. All individuals and the two pets were then prescribed a 5-day eradication protocol consisting of nasal mupirocin, topical povidone–iodine shampoo and chlorhexidine gluconate body wash, and oral cephadrine as an antibiotic agent. Swabs of the axilla of the index patient and the armpit of the cat were still positive after the 5-day protocol. Genetic analysis of all specimens showed indistinguishable patterns among all eight strains (96·1% [SD 1·2]).

In a similar investigation, Manian⁷⁹ used pulse-field gel electrophoresis to isolate a strain of mupirocin-resistant MRSA from the nares of a healthy dog whose owner had experienced repeated episodes of soft-tissue staphylococcal infections. The chromosomal pattern was identical for the human and canine strains. In 2006, Vitale and colleagues⁶⁹ isolated MRSA from the skin lesions of a 3-year-old domestic short-haired cat with flea allergy and pyoderma. Identification of MRSA was shown by detection of penicillin binding protein 2a and by pulse-field gel electrophoresis, and the isolate was confirmed as a USA300 clone. This was the first confirmed case of USA300 community-acquired MRSA isolated from a household pet.⁶⁹

Recent analysis of pet-associated MRSA strains has shown evidence of a possible role of pets in the transmission of fluoroquinolone-resistant strains to human beings. Lin and Davies⁷⁹ identified strains of multidrug-resistant *S aureus* isolated from dogs and analysed their relation to strains of human origin by use of multilocus sequence typing and analysis with the eBURST programme. Two canine strains were identified as sequence type 239, an epidemic MRSA strain common in human isolates, and both showed high-level resistance to the fluoroquinolones. The investigators concluded that the treatment of infections in animals with fluoroquinolones might contribute to the emergence of fluoroquinolone-resistant strains in pets that might then be transferred to human beings. In a more in-depth investigation of MRSA susceptibility patterns among domestic animals, Morris and colleagues⁸⁰ did a retrospective review of 139 *S aureus* isolates cultured from cats and dogs treated at the University of Pennsylvania Veterinary Hospital (Philadelphia, PA, USA), and analysed antibiotic susceptibility profiles for each isolate. 35% (39 of 111) of *S aureus* strains were MRSA, and among the 39 MRSA strains, susceptibility was modest for clindamycin (28%), erythromycin (15%), and fluoroquinolone agents (10%), suggesting that MRSA strains in pets are likely to be multidrug resistant. The most reliable oral drugs from the panel were chloramphenicol (90%) and co-trimoxazole (97%).

Clinical manifestations

Scientific reports of the clinical manifestations of MRSA infections on cats or dogs in the veterinary literature are uncommon, but a few case reports have been published. Tomlin and colleagues⁸¹ reported a case series of 11 dogs with MRSA infection. Eight of the 11 cases were associated with surgical procedures, most of which were orthopaedic procedures, and three were related to atopic dermatitis. Susceptibility data revealed that all MRSA strains were vancomycin susceptible, but that some were resistant to macrolides and fluoroquinolones. Most of the strains were susceptible to co-trimoxazole and tetracyclines. Of the eight surgical cases, six dogs were returned to the operating room to manage their infections. Oral antibiotic therapy with culture and susceptibility data improved or resolved MRSA infections in nine of 11 dogs (one dog was euthanised and one was lost to follow-up). MRSA-related skin infections of pets seem to occur in various manifestations, including simple dermatitis, pustular disease, and even perineal cellulitis, and can be easily spread to owners (figure 4).

Management

Specific therapy for pet-associated MRSA infections is similar to regimens used in most community-acquired MRSA syndromes. Contact with an asymptomatic pet is not a risk factor for sensitive or immunocompromised patients for acquiring *S aureus*, because most household

pets are not likely to be MRSA colonised. Since most infections are skin and soft-tissue related, mild-to-moderate infections can be treated with oral antistaphylococcal agents. Oral co-trimoxazole, doxycycline or minocycline, or clindamycin are the mainstays of therapy. Oral linezolid is often used an alternative for more severe infections. A second oral antibiotic should be added if streptococci are suspected and co-trimoxazole or doxycycline have been given because these drugs have relatively poor coverage against *S pyogenes*. For more complicated suppurative or systemic infections, parenteral therapy with a glycopeptide antibiotic (vancomycin or teicoplanin), daptomycin, linezolid, tigecycline, or quinupristin–dalfopristin should be considered.

Although the transmission of pathogenic strains of MRSA between human beings and domestic animals has been well documented, their drug susceptibility profile analysed, and their role in pet-associated and human infections further studied, much more remains to be learned about MRSA and pet-associated human infections. Future research needs to improve understanding of the dog–MRSA host–pathogen relations, to enhance recognition of the mechanisms of canine–human transmission, and to elucidate the virulence factors in domestic pet-associated strains.

Conclusion

Pet owners are often unaware of the potential for transmission of life-threatening pathogens from their canine and feline companions. Bite injuries are a major cause of injury in the USA and Europe each year, particularly in children. Bites to the hands, forearms, neck, and head have the potential for the highest morbidity. Common pathogens in these injuries include oral anaerobes, *P multocida*, *C canimorsus*, and MRSA. Treatment of cat and dog bites should include wound assessment, deep culture, radiography, debridement, wound management, and rabies prophylaxis if applicable. Antibiotic therapy should be directed towards the anticipated pathogens. Health-care providers are at the forefront of protecting the vital relationships between people and their pets. Clinicians must continue to promote loving pet ownership, take an adequate pet history, and be aware that associated diseases are preventable via recognition, education, and simple precautions.

Conflicts of interest

We declare that we have no conflicts of interest.

References

- 1 Savolainen P, Zhang YP, Luo J, Lundeberg J, Leitner T. Genetic evidence for an East Asian origin of domestic dogs. *Science* 2002; **298**: 1610–13.
- 2 Driscoll CA, Menotti-Raymond M, Roca AL, et al. The Near Eastern origin of cat domestication. *Science* 2007; **317**: 519–23.
- 3 Humane Society of the United States. US pet ownership statistics. http://www.hsus.org/pets/issues_affecting_our_pets/pet_overpopulation_and_ownership_statistics/us_pet_ownership_statistics.html (accessed April 27, 2009).

Search strategy and selection criteria

Data for this Review were identified by searches of Medline and UpToDate version 16-2, and references of relevant articles. The Medline database was searched from October, 1996, through April, 2008. Search terms were "pet infections", "bites", "wounds", "cats", "dogs", "Pasteurella", "Capnocytophaga", "zoonoses", and "methicillin-resistant *Staphylococcus aureus*". Only English language papers were reviewed.

- 4 UK Pet Food Manufacturers' Association. Pet statistics. <http://www.pfma.org.uk/statistics/pet-statistics.htm> (accessed April 27, 2009).
- 5 Tan JS. Human zoonotic infections transmitted by dogs and cats. *Arch Intern Med* 1997; **157**: 1933–43.
- 6 Centers for Disease Control and Prevention. Nonfatal dog bite-related injuries treated in hospital emergency departments—United States, 2001. *MMWR Morb Mortal Wkly Rep* 2003; **52**: 605–10.
- 7 Quinlan KP, Sacks JJ. Hospitalizations for dog bite injuries. *JAMA* 1999; **281**: 232–33.
- 8 Dire DJ. Emergency management of dog and cat bite wounds. *Emerg Med Clin North Am* 1992; **10**: 719–36.
- 9 Weiss HB, Friedman DI, Coben JH. Incidence of dog bite injuries treated in emergency departments. *JAMA* 1998; **279**: 51–53.
- 10 Matter HC, Sentinella A. The epidemiology of bite and scratch injuries by vertebrate animals in Switzerland. *Eur J Epidemiol* 1998; **14**: 483–90.
- 11 Palacio J, León M, García-Belenguer S. Epidemiological aspects of dog bites. *Gac Sanit* 2005; **19**: 50–58 (in Spanish).
- 12 MacBean CE, Taylor DM, Ashby K. Animal and human bite injuries in Victoria, 1998–2004. *Med J Aust* 2007; **186**: 38–40.
- 13 Hon KL, Fu CC, Chor CM, et al. Issues associated with dog bite injuries in children and adolescents assessed at the emergency department. *Pediatr Emerg Care* 2007; **23**: 445–49.
- 14 Shuler CM, DeBess EE, Lapidus JA, Hedberg K. Canine and human factors related to dog bite injuries. *J Am Vet Med Assoc* 2008; **232**: 542–46.
- 15 Sacks JJ, Sinclair L, Gilchrist J, Golab GC, Lockwood R. Breeds of dogs involved in fatal human attacks in the United States between 1979 and 1998. *J Am Vet Med Assoc* 2000; **217**: 836–40.
- 16 Sacks JJ, Lockwood R, Hornreich J, Sattin RW. Fatal dog attacks, 1989–1994. *Pediatrics* 1996; **97**: 891–95.
- 17 Talan DA, Citron DM, Abrahamian FM, Moran GJ, Goldstein EJ. Bacteriologic analysis of infected dog and cat bites. Emergency Medicine Animal Bite Infection Study Group. *N Engl J Med* 1999; **340**: 85–92.
- 18 Ostanello F, Gherardi A, Caprioli A, La Placa L, Passini A, Prosperi S. Incidence of injuries caused by dogs and cats treated in emergency departments in a major Italian city. *Emerg Med J* 2005; **22**: 260–62.
- 19 Kravetz JD, Federman DG. Cat-associated zoonoses. *Arch Intern Med* 2002; **162**: 1945–52.
- 20 Pers C, Gahrn-Hansen B, Frederiksen W. *Capnocytophaga canimorsus* septicemia in Denmark, 1982–1995: review of 39 cases. *Clin Infect Dis* 1996; **23**: 71–75.
- 21 Fleisher GR. The management of bite wounds. *N Engl J Med* 1999; **340**: 138–40.
- 22 Callahan M. Controversies in antibiotic choices for bite wounds. *Ann Emerg Med* 1988; **17**: 1321–30.
- 23 Stevens DL, Bisno AL, Chambers HF, et al. Practice guidelines for the diagnosis and management of skin and soft-tissue infections [published erratum in *Clin Infect Dis* 2005; **41**: 1830 and *Clin Infect Dis* 2006; **42**: 1219 (dosage error in text)]. *Clin Infect Dis* 2005; **41**: 1373–406.
- 24 Morgan M, Palmer J. Dog bites. *BMJ* 2007; **334**: 413–17.
- 25 Stucker FJ, Shaw GY, Boyd S, Shockley WW. Management of animal and human bites in the head and neck. *Arch Otolaryngol Head Neck Surg* 1990; **116**: 789–93.
- 26 Hagan M, Goldstein EJC, Sanford JP. Bites from pet animals. *Hosp Prac* 1993; **28**: 79–86, 90.
- 27 Manning SE, Rupprecht CE, Fishbein D, et al. Human rabies prevention—United States, 2008: recommendations of the Advisory Committee on Immunization Practices. *MMWR Recomm Rep* 2008; **57** (RR-3): 1–28.
- 28 Goldstein EJC, Citron DM. Dog bite wounds and infection: a prospective clinical study. *Ann Emerg Med* 1980; **9**: 508–12.
- 29 Mitrovetski S, Kimble F. Cat bites of the hand. *Aust N Z J Surg* 2004; **74**: 859–62.
- 30 Goldstein EJC, Citron DM, Merriam CV, Warren YA, Tyrrell K, Fernandez H. Comparative in vitro activity of ertapenem and 11 other antimicrobial agents against aerobic and anaerobic pathogens isolated from skin and soft tissue animal and human bite wound infections. *J Antimicrob Chemother* 2001; **48**: 641–51.
- 31 Takeda N, Kikuchi K, Asano R, et al. Recurrent septicemia caused by *Streptococcus canis* after a dog bite. *Scand J Infect Dis* 2001; **33**: 927–28.
- 32 Lion C, Escande F, Burdin JC. *Capnocytophaga canimorsus* infection in human: review of the literature and cases report. *Eur J Epidemiol* 1996; **12**: 521–33.
- 33 Brenner D, Hollis D, Fanning R. *Capnocytophaga canimorsus* sp. nov. (formerly CDC group DF-2), a cause of septicemia following dog bite, and *C. cymodegmi* sp. nov., a cause of localized wound infection following dog bite. *J Clin Microbiol* 1989; **27**: 231–35.
- 34 de Boer MG, Lambregts PC, van Dam AP, van 't Wout JW. Meningitis caused by *Capnocytophaga canimorsus*: when to expect the unexpected. *Clin Neurol Neurosurg* 2007; **109**: 393–98.
- 35 Bobo RA, Newton EJ. A previously undescribed Gram-negative bacillus causing septicemia and meningitis. *Am J Clin Pathol* 1976; **65**: 564–69.
- 36 Butler T, Weaver RE, Ramani TK, et al. Unidentified Gram-negative rod infection: a new disease of man. *Ann Intern Med* 1977; **86**: 1–5.
- 37 Meyer S, Shin H, Cornelis GR. *Capnocytophaga canimorsus* resists phagocytosis by macrophages and blocks the ability of macrophages to kill other bacteria. *Immunobiology* 2008; **213**: 805–14.
- 38 Shurin SB, Socransky SS, Sweeney E, Stossel TP. A neutrophil disorder induced by *Capnocytophaga*, a dental micro-organism. *N Engl J Med* 1979; **301**: 849–54.
- 39 Alugupalli KR, Kalfas S. Degradation of lactoferrin by periodontitis-associated bacteria. *FEMS Microbiol Lett* 1996; **145**: 209–14.
- 40 Jolivet-Gougeon A, Sixou JL, Tamanai-Shacoori Z, Bonnaure-Mallet M. Antimicrobial treatment of *Capnocytophaga* infections. *Int J Antimicrob Agents* 2007; **29**: 367–73.
- 41 Wilson ME, Jonak-Urbanczyk JT, Bronson PM, Dudas KC, Apicella MA, Genco RJ. *Capnocytophaga* species: increased resistance of clinical isolates to serum bactericidal action. *J Infect Dis* 1987; **156**: 99–106.
- 42 Band RA, Gaieski DF, Goyal M, Perrone J. A 52-year-old man with malaise and a petechial rash. *J Emerg Med* 2008; published online Aug 22. DOI: 10.1016/j.jemermed.2007.12.031.
- 43 Sawmiller CJ, Dudrick SJ, Hamzi M. Postsplenectomy *Capnocytophaga canimorsus* sepsis presenting as an acute abdomen. *Arch Surg* 1998; **133**: 1362–65.
- 44 Gouin P, Veber B, Collange O, Frebourg N, Dureuil B. An unusual aetiology for septic shock: *Capnocytophaga canimorsus*. Is always dog man's best friend?. *Ann Fr Anesth Reanim* 2004; **23**: 1185–88 (in French).
- 45 Sandoe JA. *Capnocytophaga canimorsus* endocarditis. *J Med Microbiol* 2004; **53**: 245–48.
- 46 Mirza I, Wolk J, Toth L, Rostenberg P, Kranwinkel R, Sieber SC. Waterhouse-Friderichsen syndrome secondary to *Capnocytophaga canimorsus* septicemia and demonstration of bacteremia by peripheral blood smear. *Arch Pathol Lab Med* 2000; **124**: 859–63.
- 47 Deshmukh PM, Camp CJ, Rose FB, Narayanan S. *Capnocytophaga canimorsus* sepsis with purpura fulminans and symmetrical gangrene following a dog bite in a shelter employee. *Am J Med Sci* 2004; **327**: 369–72.
- 48 Von Graevenitz A, Zbinden R, Muters R. *Actinobacillus*, *Capnocytophaga*, *Eikenella*, *Kingella*, *Pasteurella*, and other fastidious or rarely encountered Gram-negative rods. In: Murray PR, ed. *Manual of clinical microbiology*. Washington, DC: American Society for Microbiology, 2007: 621.
- 49 Boyce JD, Adler B. How does *Pasteurella multocida* respond to the host environment? *Curr Opin Microbiol* 2006; **9**: 117–22.

- 50 Wade T, Booy R, Teare EL, Kroll S. *Pasteurella multocida* meningitis in infancy—a lick may be as bad as a bite). *Eur J Pediatr* 1999; **158**: 875–78.
- 51 Chang K, Siu LK, Chen YH, et al. Fatal *Pasteurella multocida* septicemia and necrotizing fasciitis related with wound licked by a domestic dog. *Scand J Infect Dis* 2007; **39**: 167–70.
- 52 Weber DJ, Wolfson JS, Swartz MN, Hooper DC. *Pasteurella multocida* infections. Report of 34 cases and review of the literature. *Medicine (Baltimore)* 1984; **63**: 133–54.
- 53 Hubbert WT, Rosen MN. *Pasteurella multocida* infections: I *Pasteurella multocida* infection due to animal bite. *Am J Public Health Nations Health* 1970; **60**: 1103–08.
- 54 Hubbert WT, Rosen MN. *Pasteurella multocida* infections: II *Pasteurella multocida* infection in man unrelated to animal bite. *Am J Public Health Nations Health* 1970; **60**: 1109–17.
- 55 Drenjancevic IH, Ivic D, Drenjancevic D, Ivic J, Pelc B, Vukovic D. Fatal fulminant sepsis due to a cat bite in an immunocompromised patient. *Wien Klin Wochenschr* 2008; **120**: 504–06.
- 56 Al-Sabah S, Goldberg P, Qureshi ST. *Pasteurella multocida* septic shock following liver transplantation treated with drotrecogin alpha (activated). *Transpl Infect Dis* 2007; **9**: 233–36.
- 57 Kimura R, Hayashi Y, Takeuchi T, et al. *Pasteurella multocida* septicemia caused by close contact with a domestic cat: case report and literature review. *J Infect Chemother* 2004; **10**: 250–52.
- 58 Ashley BD, Noone M, Dwarakanath AD, Malnick H. Fatal *Pasteurella dagmatis* peritonitis and septicemia in a patient with cirrhosis: a case report and review of the literature. *J Clin Pathol* 2004; **57**: 210–12.
- 59 Green BT, Ramsey KM, Nolan PE. *Pasteurella multocida* meningitis: case report and review of the last 11 y. *Scand J Infect Dis* 2002; **34**: 213–17.
- 60 Nettles RE, Sexton DJ. *Pasteurella multocida* prosthetic valve endocarditis: case report and review. *Clin Infect Dis* 1997; **25**: 920–21.
- 61 Fayad G, Modine T, Mokhtari S, et al. *Pasteurella multocida* prosthetic valve endocarditis: case report and review of the last 11 years. *J Heart Valve Dis* 2003; **12**: 261–63.
- 62 Koneman EW, Allen SD, Janda WM, Schreckenberger PC, Winn WC Jr. Miscellaneous fastidious Gram negative bacteria. In: Color atlas and textbook of diagnostic microbiology (5th edn). Philadelphia: Lippincott Williams and Wilkins, 1997: 416–18.
- 63 Rosenau A, Labigne A, Escande F, Courcoux P, Philippon A. Plasmid-mediated ROB-1 beta-lactamase in *Pasteurella multocida* from a human specimen. *Antimicrob Agents Chemother* 1991; **35**: 2419–22.
- 64 Chambers HF. The changing epidemiology of *Staphylococcus aureus*? *Emerg Infect Dis* 2001; **7**: 178–82.
- 65 King MD, Humphrey BJ, Wang YF, Kourbatova EV, Ray SM, Blumberg HM. Emergence of community-acquired methicillin-resistant *Staphylococcus aureus* USA 300 clone as the predominant cause of skin and soft-tissue infections. *Ann Intern Med* 2006; **144**: 309–17.
- 66 Rankin S, Roberts S, O'Shea K, Maloney D, Lorenzo M, Benson CE. Panton Valentine leukocidin (PVL) toxin positive MRSA strains isolated from companion animals. *Vet Microbiol* 2005; **108**: 145–48.
- 67 Gortel K, Campbell KL, Kakoma I, Whitem T, Schaeffer DJ, Weisiger RM. Methicillin resistance among staphylococci isolated from dogs. *Am J Vet Res* 1999; **60**: 1526–30.
- 68 van Duijkeren E, Wolfhagen MJ, Box AT, Heck ME, Wannet WJ, Fluit AC. Human-to-dog transmission of methicillin-resistant *Staphylococcus aureus*. *Emerg Infect Dis* 2004; **10**: 2235–37.
- 69 Vitale CB, Gross TL, Weese JS. Methicillin-resistant *Staphylococcus aureus* in cat and owner. *Emerg Infect Dis* 2006; **12**: 1998–2000.
- 70 Manian FA. Asymptomatic nasal carriage of mupirocin-resistant, methicillin-resistant *Staphylococcus aureus* (MRSA) in a pet dog associated with MRSA infection in household contacts. *Clin Infect Dis* 2003; **36**: e26–28.
- 71 Scott GM, Thomson R, Malone-Lee J, Ridgway GL. Cross-infection between animals and man: possible feline transmission of *Staphylococcus aureus* infection in humans? *J Hosp Infect* 1988; **12**: 29–34.
- 72 Cefai C, Ashurst S, Owens S. Human carriage of MRSA linked with a pet dog. *Lancet* 1994; **344**: 539–40.
- 73 Loeffler A, Boag AK, Sung J, et al. Prevalence of methicillin-resistant *Staphylococcus aureus* among staff and pets in a small animal referral hospital in the UK. *J Antimicrob Chemother* 2005; **56**: 692–97.
- 74 Mann PH. Antibiotic sensitivity testing and bacteriophage typing of staphylococci found in the nostrils of dogs and cats. *J Am Vet Med Assoc* 1959; **134**: 469–70.
- 75 Live I, Nichols AC. The animal hospital as a source of antibiotic-resistant staphylococci. *J Infect Dis* 1961; **108**: 195–204.
- 76 Barber M. Methicillin-resistant staphylococci. *J Clin Pathol* 1961; **14**: 385–93.
- 77 Adekeye JD. Studies on possible cross transmission of mercuric chloride resistant *Staphylococcus aureus* between dogs and kennel attendants. *Int J Zoonoses* 1981; **8**: 72–76.
- 78 Simoons-Smit AM, Savelkoul PH, Stoof J, Starink TM, Vandenbroucke-Grauls CM. Transmission of *Staphylococcus aureus* between humans and domestic animals in a household. *Eur J Clin Microbiol Infect Dis* 2000; **19**: 150–52.
- 79 Lin AE, Davies JE. Occurrence of highly fluoroquinolone-resistant and methicillin-resistant *Staphylococcus aureus* in domestic animals. *Can J Microbiol* 2007; **53**: 925–29.
- 80 Morris DO, Rook KA, Shofer FS, Rankin SC. Screening of *Staphylococcus aureus*, *Staphylococcus intermedius*, and *Staphylococcus schleiferi* isolates obtained from small companion animals for antimicrobial resistance: a retrospective review of 749 isolates (2003–04). *Vet Dermatol* 2006; **17**: 332–37.
- 81 Tomlin J, Peard MJ, Lloyd DH, et al. Methicillin-resistant *Staphylococcus aureus* infections in 11 dogs. *Vet Rec* 1999; **144**: 60–64.